

Operation Intruction

(Pictures are for reference only)

Step 1, Use the ISP Alcohol and Cotton Swabs to remove all the adhesives on the Inlay and phone. Be careful to avoid damage any thing



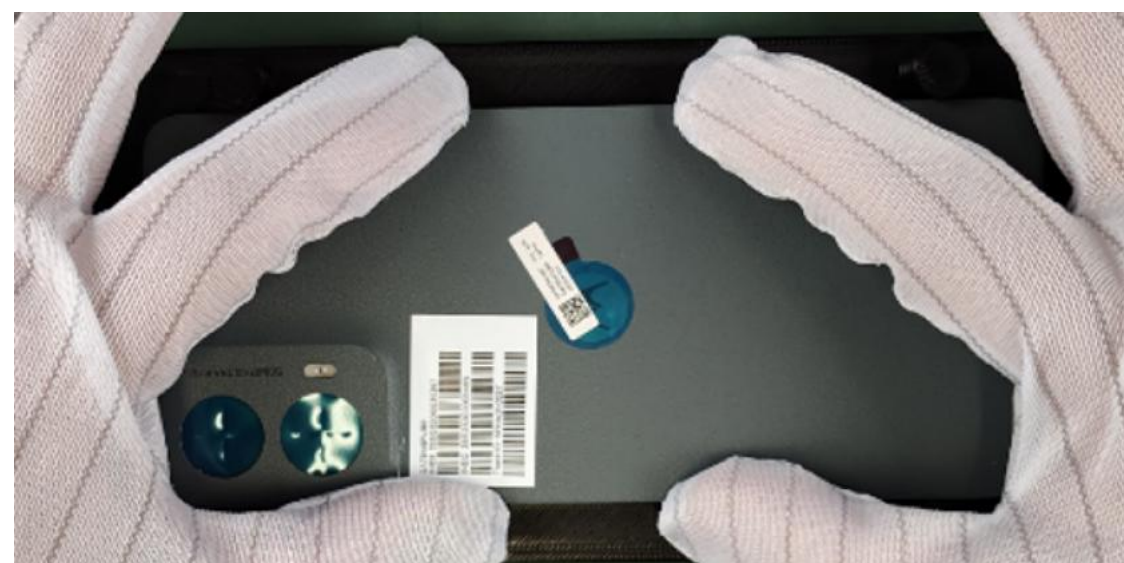
Step 2, Use the Plastic Tweezer to pick up inlay adhesive from the liner, put the adhesive on fixture, adhesive side face up. Align the adhesive position holes with fixture position pole for adhesive, make sure the adhesive place in fixture well, no uneven, no deform



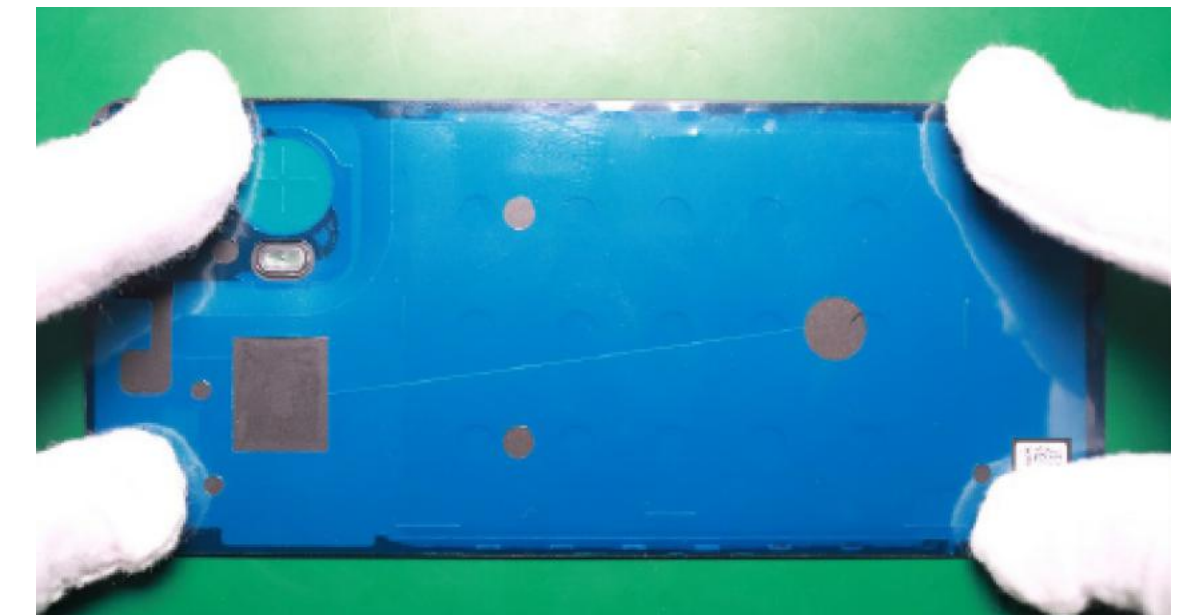
Step 3, Use hand put inlay in fixture. Locate the inlay with fixture big poles and align inlay rear camera area with fixture big location pole,



Step 4, Use finger press the surround inlay to paste adhesive on inlay



Step 5, Use fingers to press the surrounding Inlay Adhesive 3 times to activate it as shown and peel off the liner.



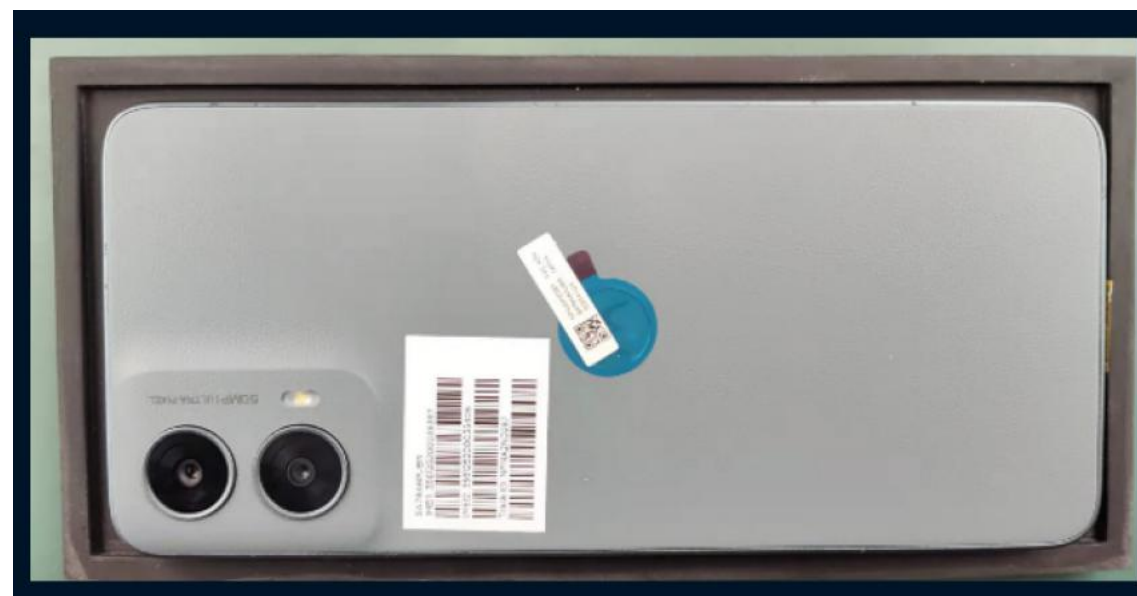
Step 6, Use fingers to place the Battery Cover on the phone as shown.



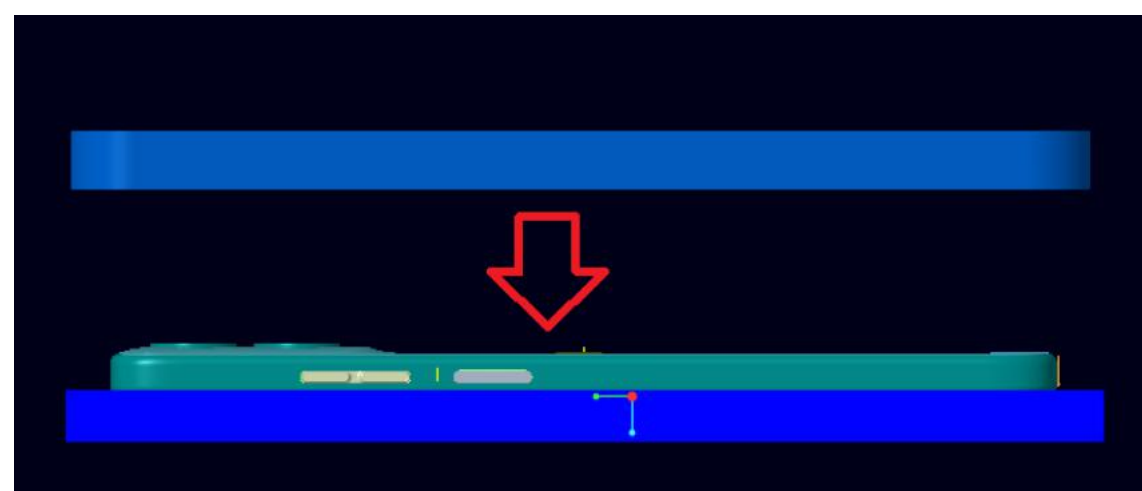
Operation Instruction

(Pictures are only for reference)

Step 1, Put the phone on press pad, display down

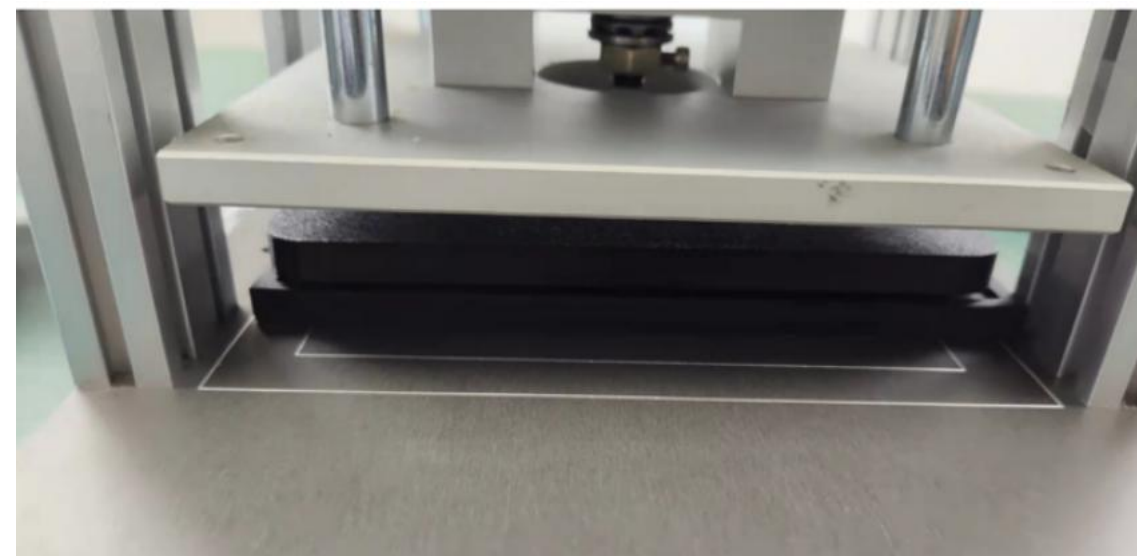


Step 2, Put the Press Pad on the phone, make sure rear camera deco on phone align with the hole on Press Pad.



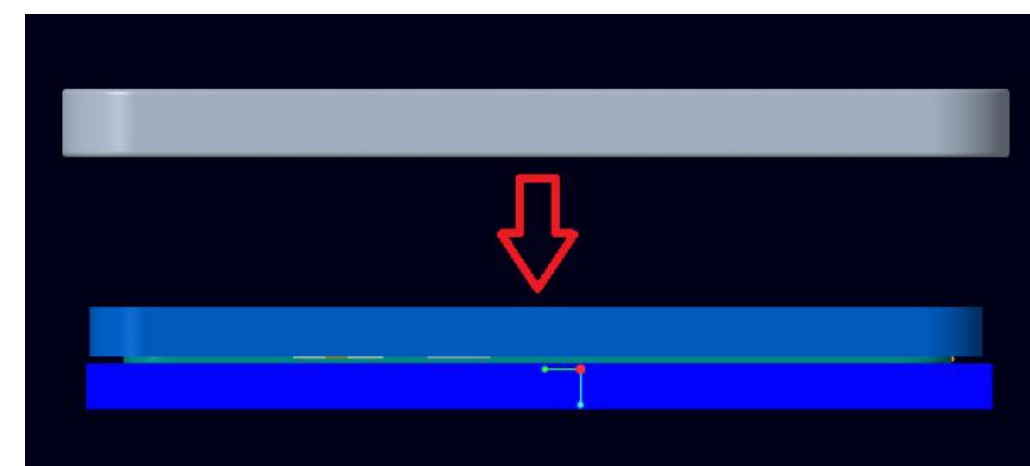
Plan 1, Manual press

Put the phone and fixture into manual pressure machine together. Use the 600N-700N pressure to press the phone about 5 minutes to activate adhesive. Then take out the phone from fixture.



Plan 2, Pneumatic Press

Put the general inlay press cover on press pad to protect the phone, make sure the press pad in cover completely.



Put the phone and fixture into Pneumatic pressure machine, suggestion the pressure is 900N-1000N, keep the pressure in 40s to activate the adhesive. Then take out the phone from the fixture.

